

Hertfordshire and West Essex

# Shared Care Record

Internal Bulletin, 12th December 2022

1. Cambridge University Hospitals NHS FT data now live
2. Upcoming connection of shared care records across Suffolk, Essex and Hertfordshire

## BACKGROUND

The Hertfordshire and West Essex (HWE) Shared Care Record brings together selected information from the electronic records held by acute trusts, GP practices, community, hospice, mental health and out of hours providers across the ICS, and Hertfordshire County Council. The HWE Shared Care Record is also connected to receive information from several acute trusts who are part of the [London Care Record](#).

The technology used to create the HWE Shared Care Record is the Cerner Health Information Exchange (HIE) which creates a read-only summary view of up-to-date information which can be instantly accessed by health and care professionals at the point of care.

## 1. CAMBRIDGE UNIVERSITY HOSPITALS NHS FOUNDATION TRUST (CUH) - DATA NOW LIVE

The following data sets are now available from CUH to staff in all partner organisations using the HWE Shared Care Record:

- Allergies
- Appointments\*
- Admissions/discharges/visits
- Discharge summaries
- Encounter(s)
- Family history
- Immunisations
- Implants
- Medications
- Misc. reports - anaesthesia, progress notes
- Problems - chronic/unresolved - displayed in HIE 'Problem List' with onset date
- Diagnosis - displayed in HIE 'Problem List' without onset date
- Procedures
- Pathology\*\* - lab results, cellular pathology, microbiology
- Radiology reports
- Social history
- Vital signs

\*CUH appointments will display within the 'Care Plan' section of the HIE as a report titled 'Plan of care'. Please be aware there may be several entries as a report is generated each time an encounter is recorded.

\*\*Some pathology tests from East and North Herts NHS Trust are processed by CUH labs and will also be displayed in the Shared Care Record.

We expect staff at CUH to be able to view information from the HWE Shared Care Record in early 2023.

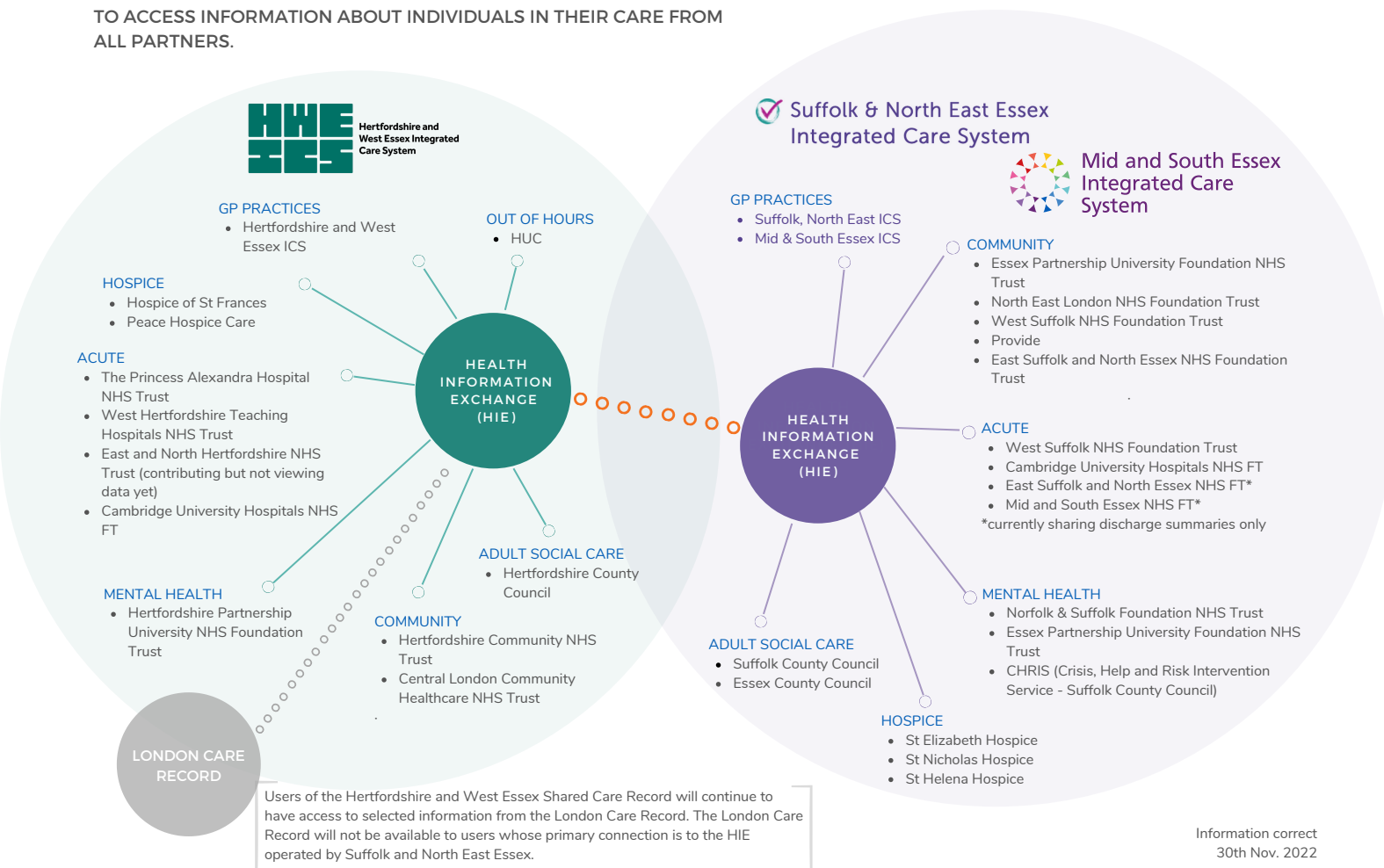
## 2. UPCOMING CONNECTION OF SHARED CARE RECORDS ACROSS SUFFOLK, ESSEX & HERTFORDSHIRE

In early 2023, the two shared care records currently in place across Suffolk, Essex and Hertfordshire will be connected so that health and care staff have secure access to more information about the individuals in their care.

Linking information across boundaries will help to improve communication and the transfer of care between services. It will create a joined-up picture that makes it quicker, easier, and safer for professionals to make informed decisions and deliver effective care.

In addition, some providers, for example Essex Partnership University Trust and Essex County Council, provide services across Essex but currently cannot access a shared care record for all their service users.

A **NEW CONNECTION BETWEEN THE TWO SHARED CARE RECORDS** IN PLACE IN **SUFFOLK, ESSEX** AND **HERTFORDSHIRE** WILL ALLOW USERS TO ACCESS INFORMATION ABOUT INDIVIDUALS IN THEIR CARE FROM ALL PARTNERS.



### HOW WILL THE CONNECTION HAPPEN?

Project/technical teams from both ICS areas have been working for several months to implement the changes necessary. Before the connection goes live, there will be a short period of planned downtime (approximately 2-3 hours) and testing for both shared care records which will be communicated in advance. There is no action required from organisations who are already connected to either HIE.

From a user's perspective there will be no change apart from an increase in the amount of information available for the individuals in their care. Users should be aware that across all areas, organisations are sharing different amounts of information in different ways. For example, two mental health trusts may share different data sets and the same type of information may appear in different sections of the HIE.

### WHAT IS THE LEGAL BASIS FOR SHARING INFORMATION?

All health and care organisations involved in this connection are part of My Care Record, our overarching approach to improving care by joining up health and care information. This means all partners have signed the My Care Record Information Sharing Agreement (ISA) which sets out common standards for information governance and security. This is in line with the UK General Data Protection Regulation (GDPR) which supports the sharing of information for the purposes of direct care. The latest version (11) of the My Care Record ISA can be found [here](#).

Only health and care staff who already have role-based access rights to view a patient/service user's record in their own organisation will be able to view the Shared Care Record. A full audit trail is maintained.

### FURTHER INFORMATION:

[Overview of the Hertfordshire and West Essex Shared Care Record](#)

[FAQs for health and care professionals](#)

[\\*NEW\\* Training videos for health and care professionals](#)

[My Care Record website](#)

For any other enquiries, please contact:

[vicki.anderson7@nhs.net](mailto:vicki.anderson7@nhs.net) - Head of Shared Care Record Communications.