

Hertfordshire and West Essex

Shared Care Record

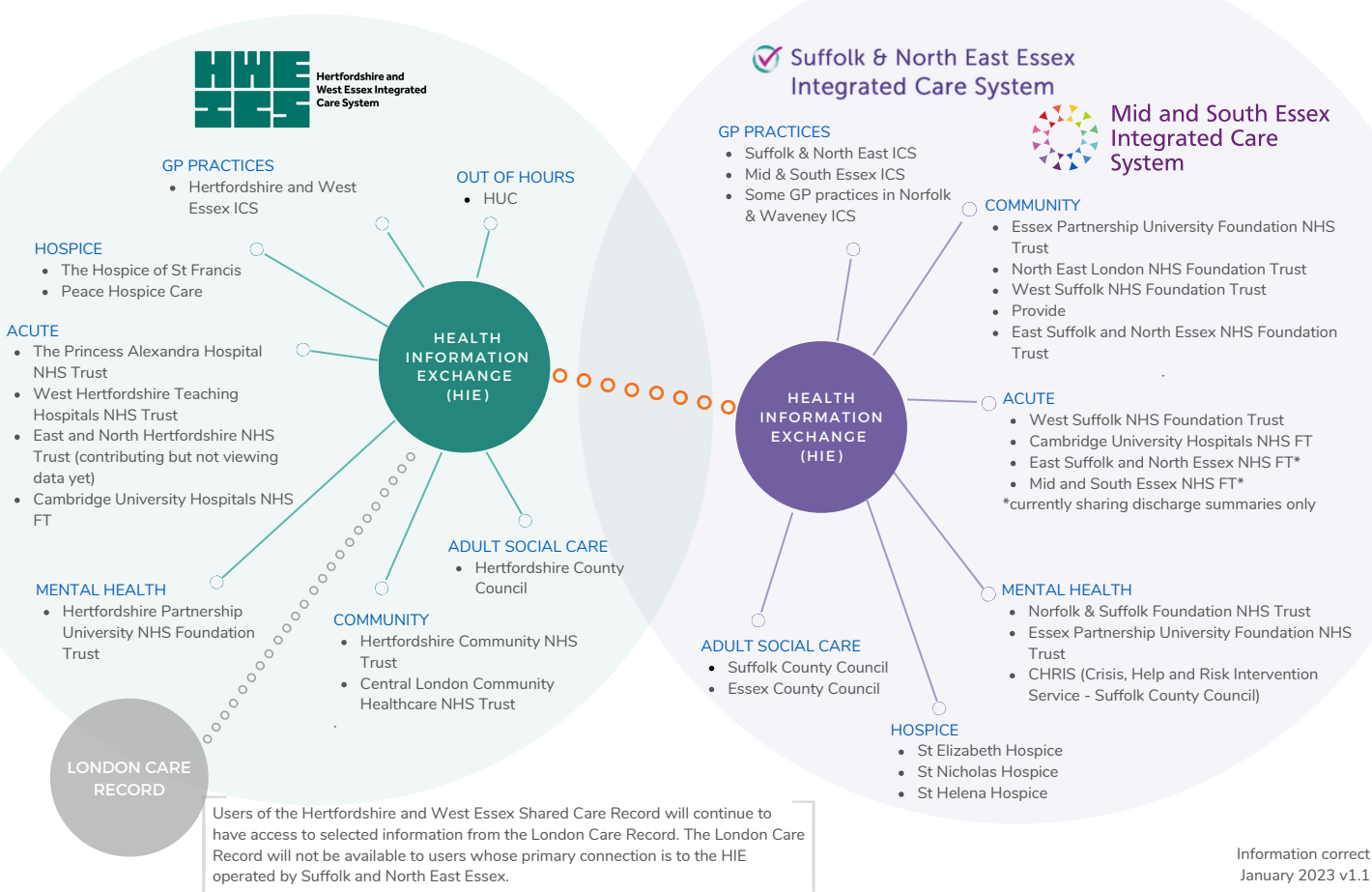
Internal Bulletin, 17th January 2023

Connection of shared care records across Hertfordshire, Essex and Suffolk

The Hertfordshire and West Essex Shared Care Record has been successfully connected to the shared care record operated by Suffolk and North East Essex Integrated Care System. This will allow secure two-way sharing of information with more providers that care for people living in our area.

Both shared care records use technology called the Oracle Cerner Health Information Exchange, or HIE. This creates an up-to-date, read-only summary view of information from multiple record systems to support frontline staff to deliver joined-up care.

A **NEW CONNECTION BETWEEN THE TWO SHARED CARE RECORDS** IN PLACE IN **SUFFOLK, ESSEX AND HERTFORDSHIRE** WILL ALLOW USERS TO ACCESS INFORMATION ABOUT INDIVIDUALS IN THEIR CARE FROM ALL PARTNERS.



WHY IS THE CONNECTION NEEDED?

Linking information across boundaries will help to improve communication and the transfer of care between services. It will create a joined-up picture that makes it quicker, easier, and safer for professionals to make informed decisions and deliver effective care. In addition, some providers, for example Essex Partnership University NHS Foundation Trust and Essex County Council, provide services across Essex but currently cannot access a shared care record for all their service users.

HOW WILL THE ADDITIONAL INFORMATION BE DISPLAYED?

From a user's perspective there will be no change apart from an increase in the amount of information available for the individuals in their care. However, users should be aware that similar organisations, such as different acute trusts, are sharing different amounts of information. For example, Mid & South Essex NHS Foundation Trust are currently sharing discharge summaries only. In addition, the same type of information from different providers, for example mental health trusts, may be displayed in different sections of the HIE.

The Shared Care Record is not the full record for an individual. Only health and care staff who already have role-based access rights to view a patient/service user's record in their own organisation will be able to view the Shared Care Record. A full audit trail of access is maintained.

WHAT IS THE LEGAL BASIS FOR SHARING INFORMATION?

All health and care organisations involved in this connection are part of My Care Record, our overarching approach to improving care by joining up health and care information. This means all partners have signed the My Care Record Information Sharing Agreement (ISA) which sets out common standards for information governance and security. This is in line with the UK General Data Protection Regulation (UK GDPR) which provides the legal basis to share information for the delivery of health and social care.

“ Making more joined-up information available to staff when they have an individual in front of them will save valuable time, reduce repetition, and prevent delays. Data saves lives.

Dr. Jane Halpin, Chief Executive Officer, HWE Integrated Care Board

FURTHER INFORMATION:

[Overview of the Hertfordshire and West Essex Shared Care Record](#)

[FAQs for health and care professionals](#)

[Training videos for health and care professionals](#)

[My Care Record website](#)

For any other enquiries, please contact:

vicki.anderson7@nhs.net - Head of Shared Care Record Communications